

Alaska Airline Flight 261

Jacques Ouellet
&
Ferri Hassani



Introduction

- Case study on the crash of flight 261
- You will see a number of circumstances leading to a disaster
- The role of engineers and managers will be illustrated
- Some of the subjects discussed in the course will be illustrated in this case

Case

- On January 2000, Alaska Airline Flight 261 crashed 20 miles off Los Angeles in the Pacific Ocean
- 84 passengers and 5 crewmen were killed
- The MD-83 Jetliner dived in the ocean from an altitude of 17,900 feet



Flight 261 Route

- You will see a reconstruction of the accident followed by the investigation
- We ask you to focus on some specific aspects of the case

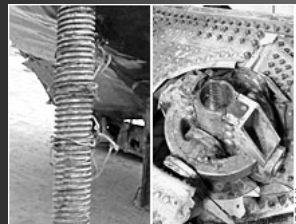


Find out in the film

- Any Whistle blower?
- Management responsibilities?
- Was Engineering Design flawed?
- Role of maintenance in this case?

Technical factors

- Jackscrew assembly
- Stabilizer Trim function
- Stabilizer Design
- Fault procedures in used



Human Factors

- Competence of Maintenance Personnel
- Role of Engineer involved
- Consequences of whistle blowing?
- Was whistle blowing effective?

Conclusions

- You can find out more from:
 - CNN.com
- Lectures to follow on Ethics
- As frequent in such disasters many contributing factors are involved